

RAJLAKSHMI ASSOCIATE

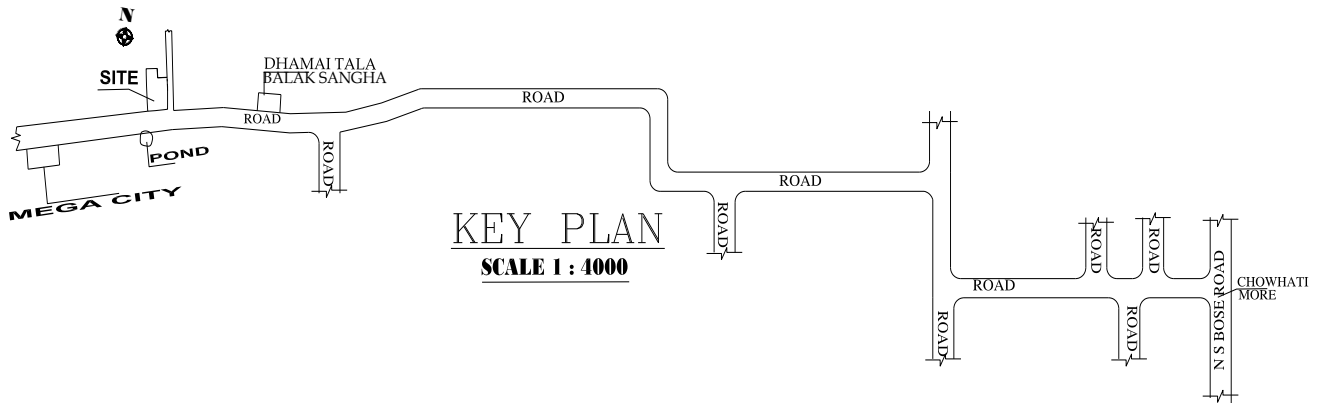
BUILDER*DEVELOPER* CIVIL CONTRACTOR

Address:-2081, Chak Garia, E-14, Sammilani Park, P.S. Survey-park, Kolkata-700075

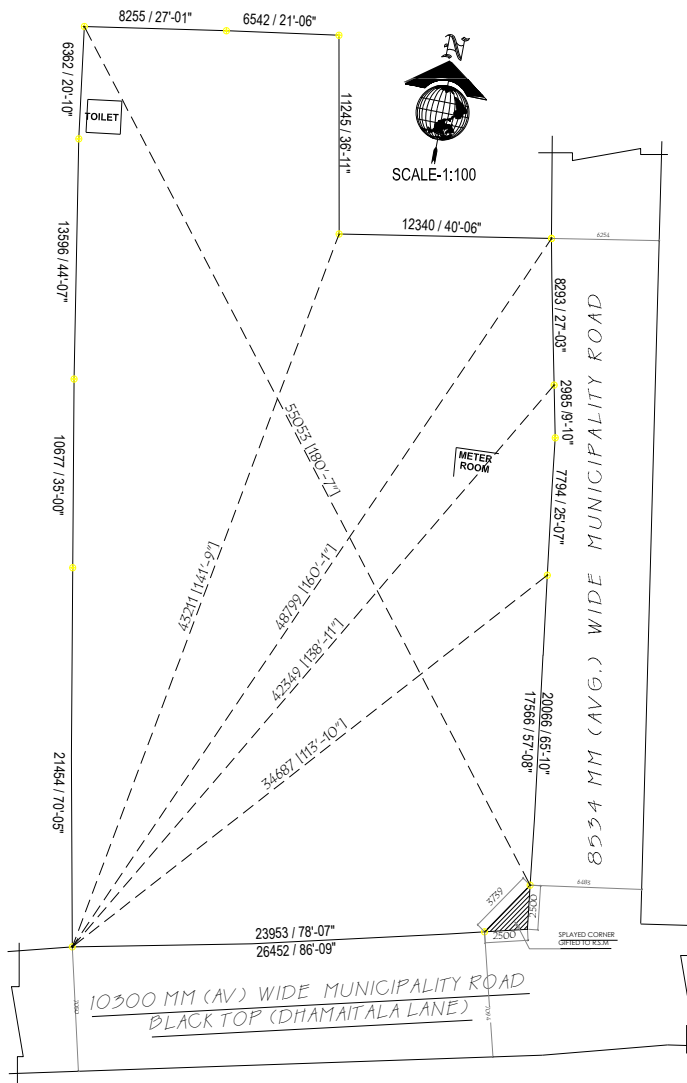
E-mail:- rajlakshmiassociate89@gmail.com , (MOB):- 9874607393, 9830277393,

(ix) The location details of the project, with clear demarcation of land dedicated for the project along with its boundaries including the latitude and longitude of the end points of the project;

The location details of the project



Demarcation of land dedicated for the project along with its boundaries



For RAJLAKSHMI ASSOCIATE

[Signature]

Partner

For RAJLAKSHMI ASSOCIATE

[Signature]

Partner